

Tennis for Kids and Women

Type of action: Playgrounds / long term action.

Type of solutions: Sport based solution.

Location of the Good Practice: Osmaniye/Turkey.

Designer/s: Kadirli municipality zoning affairs directorate. Kadirli Municipality Directorate of Youth and Sports Services.

Investor/s: Kadirli municipality.

Cost of works: 65.000€.

Extension of the area: 11.000 m².

Rational and overall scope of the intervention

Women and girls face great inequality of opportunity in almost every aspect of life. From education to business life, women have great difficulties in accessing equal opportunities. One of these fields is sports. The proportion of women participating in sports is far from men. Sports have important effects on women's health as well as everyone else. "Sports and physical activity are the basic components of a healthy life. However, the low level of physical activity of women indicates that women are also deprived of a healthy life. From this point of view, it is obvious how important it is for women to participate in sports and physical activity. In order to increase women's participation in sports and adopt a healthier lifestyle, the Kadirli municipality built tennis courts in the neighborhoods.

Target groups addressed and related needs

Unemployed housewives and children 5-10 years old.

In order to eliminate this inequality of opportunity that women and girls are exposed to in participating in sports, there are some international agreements signed as well as the constitution. These texts, to which Turkey is also a party, support the participation of women and girls in sports. According to the "Chronic Diseases Risk Factors Survey" conducted by

the Ministry of Health in 2011, it was determined that 87% of women and 77% of men throughout Turkey do not do enough physical activity. These rates reveal that the sedentary lifestyle is serious for our country.

Community engagement process / Participatory process

Announcements were made in the print media and social media accounts. The target audience was informed by printing out the brochures and distributing them to the houses.

Description of the designing/co-designing process

Kadirli municipality zoning affairs directorate. With the cooperation of Kadirli Municipality Youth and Sports Services Directorate, the most difficult places for women to access sports were determined. Accordingly, tennis courts were built with the participation of experts in their fields.

Description of technologies and material used for works

After a good planning, grass field or asphalt applications were used together to realize the ground applications of the area. The areas where concrete should be poured were determined and the infrastructure was designed by pouring concrete in these areas. Rubber floor. iron profiles wire fences

Impact on the place aesthetics

Empty and idle lands between the neighborhoods have become a regular appearance with tennis courts.

Impact on the community wellbeing

The number of women doing sports in our district and neighborhood has increased.

They learned the sport of tennis

They adopted a healthier lifestyle.

Impact on the community inclusion

Significant progress has been made in the fight against gender equality in sports. Women left their homes and joined society.

Coherence with sustainable development goals

Eliminating all forms of discrimination against women and girls is not only a fundamental human right, it is also critical to accelerating sustainable development. It has been proven time and again that the empowerment of women and girls creates a multiplier effect and accelerates economic growth and development in all areas. Building on these achievements, the Sustainable Development Goals aimed to eliminate discrimination against women and girls everywhere, especially in sports. There are still large inequalities in participation in sports in some neighbourhoods, women still do not have equal access to sports. Encouraging women to participate in sports through tennis contributed to the strengthening of policies and legislation to further gender equality.

Potential of improving people's health: Very high.

Level of creativity: Low.

Attention to gender equality and inclusion: Very high.

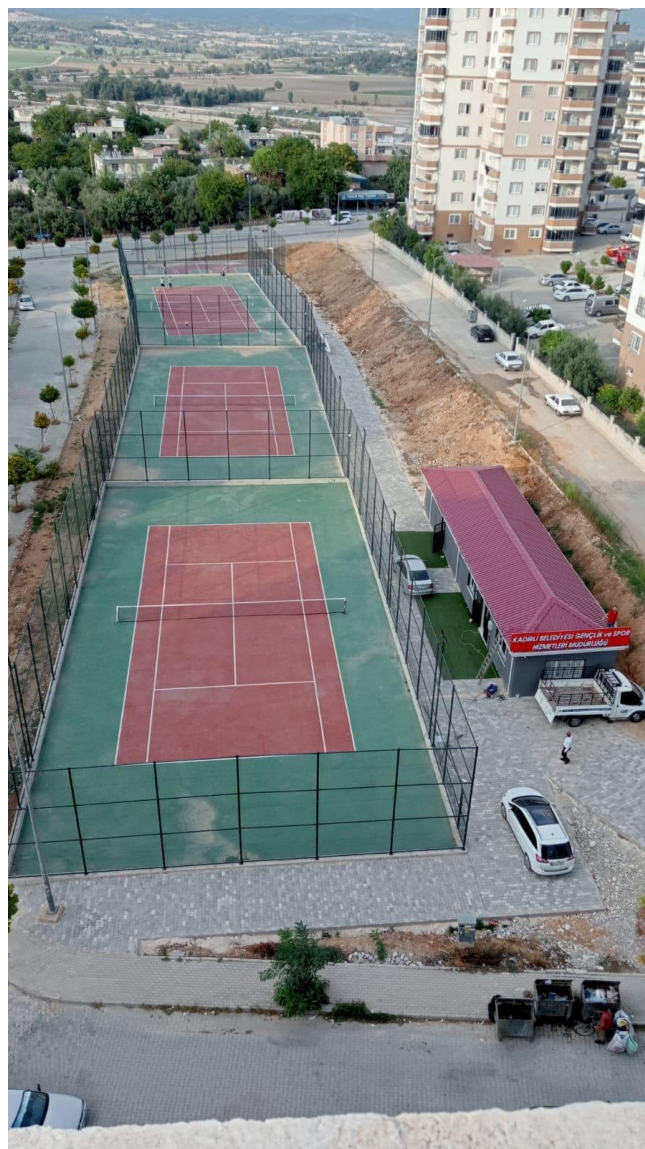


Photo by Ahmet Dalci

Aesthetic impact on the urban environment: Very high

Level of sustainability: Very high.

Links to sources

<https://www.kadirli.bel.tr/>